

# Component

## Connectors

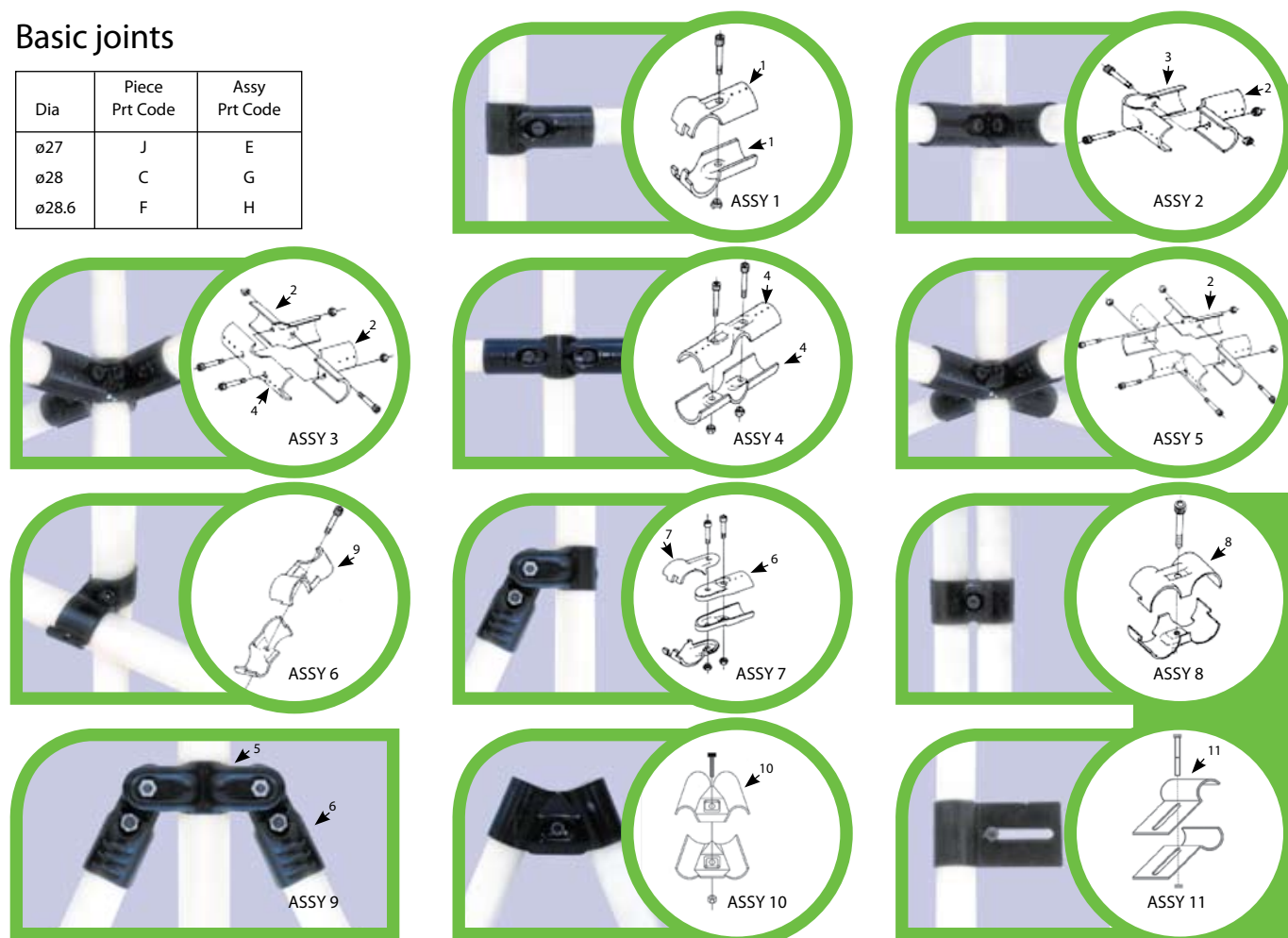
ASSY Part NumberFunction			Tubes	Joining Required	Fasteners Required
Ø27	Ø28	Ø28.6			
E1	G1	H1	Tee 90	2	1
E2	G2	H2	Elbow	3	2
E3	G3	H3	4 Way Cross	4	3
E4	G4	H4	3 Way Cross	3	2
E5	G5	H5	5 Way Cross	5	4
E6	G6	H6	Offset	2	1
E7	G7	H7	Swivel Tee	2	2
E8	G8	H8	Parallel	2	1
E9	G9	H9	Angle 45	2	1
E10	G10	H10	Grooved	1	1

## Getting connected

Basic joints are made of mild steel and finished with black electro-galvanised or zinc plated coatings. The tubing is available in PVC coated or galvanised with a wall thickness of either 0.9mm, 1.2mm or 2mm. The maintenance-free system is pre-treated against rust with an electro-galvanised coating and its quality conforms to ISO 9001 standards of production. Joints have been designed for many different functions.

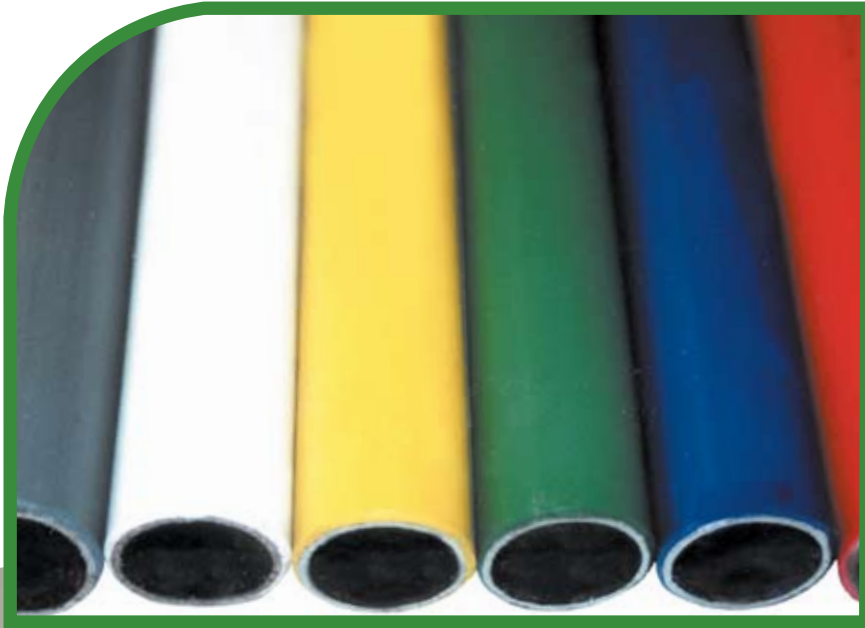
## Basic joints

Dia	Piece Prt Code	Assy Prt Code
Ø27	J	E
Ø28	C	G
Ø28.6	F	H

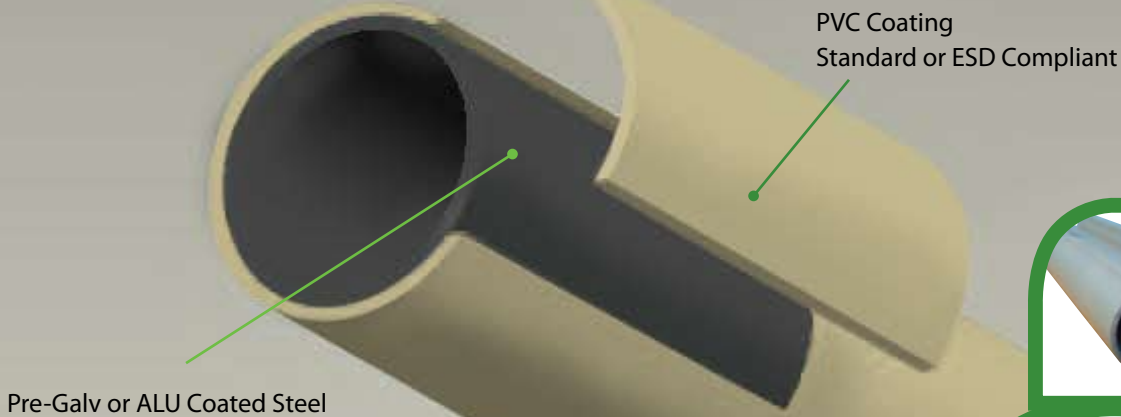


The joints interlock in order to hold the stamped steel fittings together and they do this in combination with M6 x 25 socket head cap screws. A hex nut is accommodated in a recessed area on each fitting to ensure easy tightening. Fasteners are supplied. Fittings are torqued to 12Nm (8.85 ft/lbs). The structure is simply assembled, using a 5mm (3/16") allen key.

## Tubing

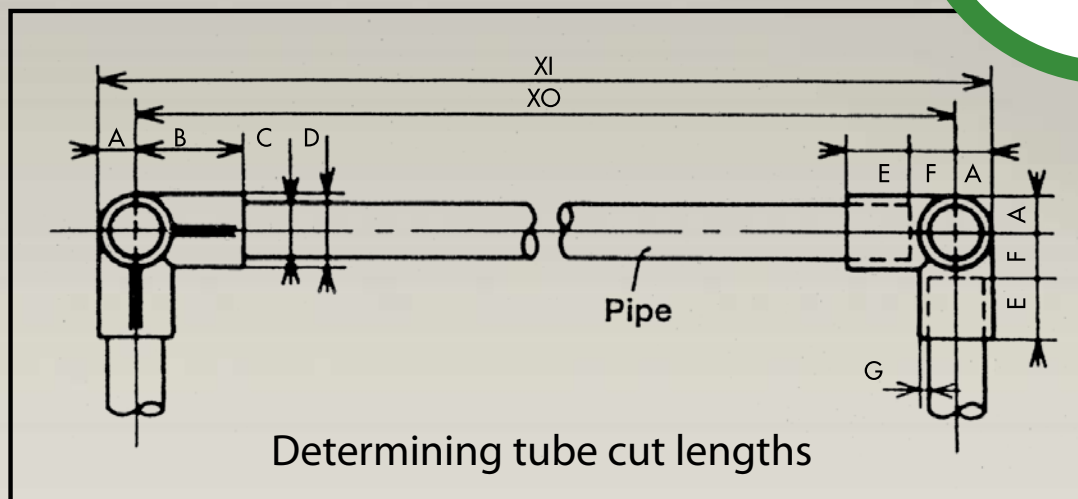


Tubing is thick-walled steel, coated with galvanising or PVC which is engineered for optimum strength, corrosion and UV-resistance, while maintaining a business-like appearance. Clean cuts can be made using a simple pipe-cutter. Tubing can be coloured to order thus facilitating inventory, safety, rework or changeover applications. Both galvanised and PVC-coated tubing are available in 3 diameters with wall thicknesses of 0.9mm, 1.2mm and 2.00mm.



### How to measure

Our superior quality, precision cold rolled tubing is available in a variety of lengths. In order to establish the cut length for inside and outside dimensions, refer to the figure below.



## Roller Track



Slide Roller Track



Normal Roller Track



Narrow Roller Track



Flanged Roller Track



## Roller Track technical details

The most taxing applications are no match for our track assemblies.

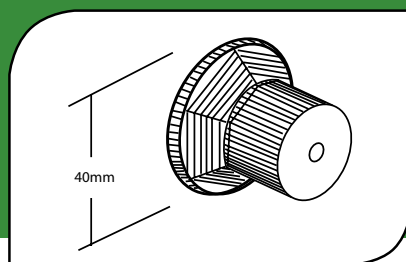
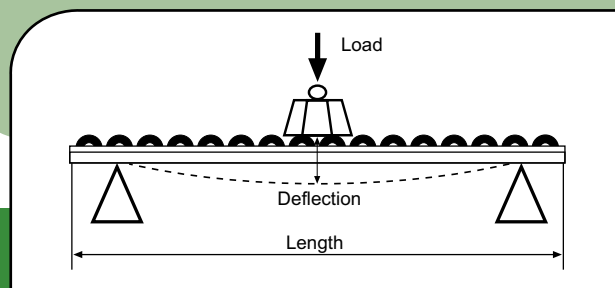
Roller Tracks are made of strong, rust-resistant galvanised steel, roll-formed for precision.

Roller Wheels are longwearing, molded Nylon/PVC and each is rated to bear a weight of 12 kg (26.4 lbs).

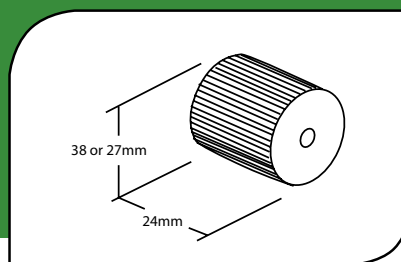
Two types, standard or flanged/end rollers are available. The latter prevent the sidetracking of containers.

Wheels are secured by steel rivets that are machine flared to maintain a fixed position. There are numerous Roller Track attaching options ensuring ease of adjustment, removal or fitting/assembly:

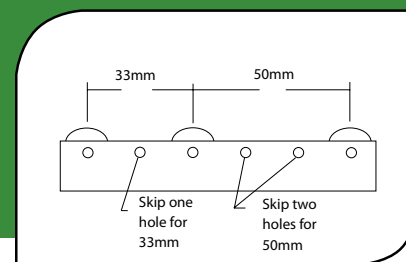
- fitted to form a bed
- fitted separately - slip on
- fitted separately - bolts



Flanged



Standard



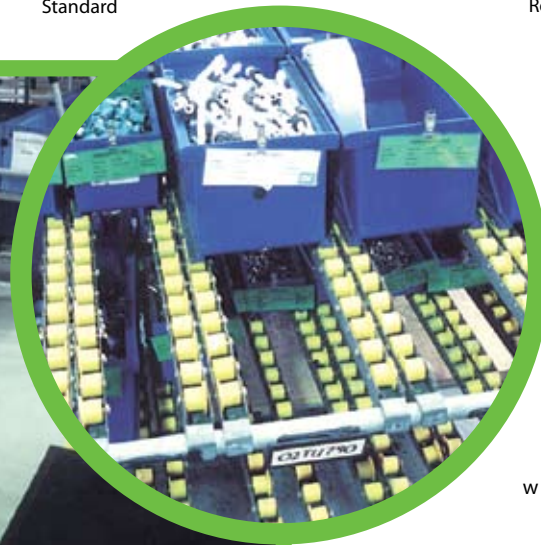
Rollers

Rolled Channel, 1.0 mm Galv  
95 mm wide  
Deflection in Millimetres (mm)

Mass at Centre of Span (kilograms)	Span Length (metres)			
	1,00	1,25	1,50	2,00
5	0,43	0,84	1,44	3,45
10	0,86	1,64	2,89	6,84
15	1,28	2,51	4,33	10,26
20	1,71	3,34	5,77	13,68

Rolled Channel, 1.6 mm Galv  
Deflection in Millimetres (mm)

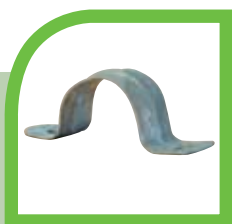
Mass at Centre of Span (kilograms)	Span Length (metres)			
	1,00 Practical	1,25 Practical	1,50 Practical	2,00 Practical
5	1,00	1,50	1,50	4,00
10	1,50	3,00	3,00	8,00
15	2,00	3,00	5,00	12,00
20	2,50	4,00	7,00	15,00
Recommended max deflection	3,30	4,20	5,00	6,70



# Component Accessories



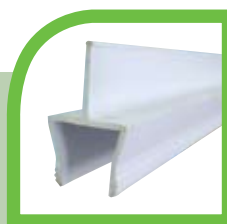
Pick-To-Light



Saddle



Polyurethane Blocks



Middle Divider



Side Divider



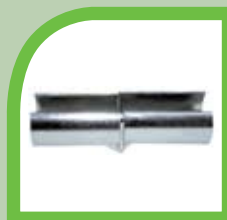
JJP11



JSTO



JFTO



TJ



JJPO2



JSSTO



JFTI



JSTI



JSSTI



JJPI2



JSSV



JRI



JCV



SFO



JRJT



Plastic Sleeve/Plug



Steel Plug



Foot Assembly



Adjustable Foot No 1



Adjustable Foot No 2



Adjustable Foot No 3



Roller Track Brake



JF



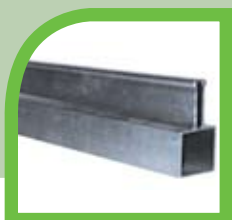
JS



Shoulder Nut, M6 Capscrew  
and M6 Nut



Plastic Clip



Aluminium Divider



JAF



Plate Castor



Spigot Castor



Assy Wheel Plate



Wheel Strip Brkt W/Assy



Double Pipe Wheel Plate



Single Pipe Wheel Plate



End Caps, Foot Plugs



Tow Hitch



Part Separator



Fitted S/Ring



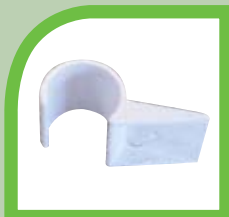
Wire Hook



Spigot



Slide Ring



Panel Clip



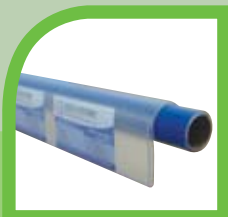
Saddle Washer



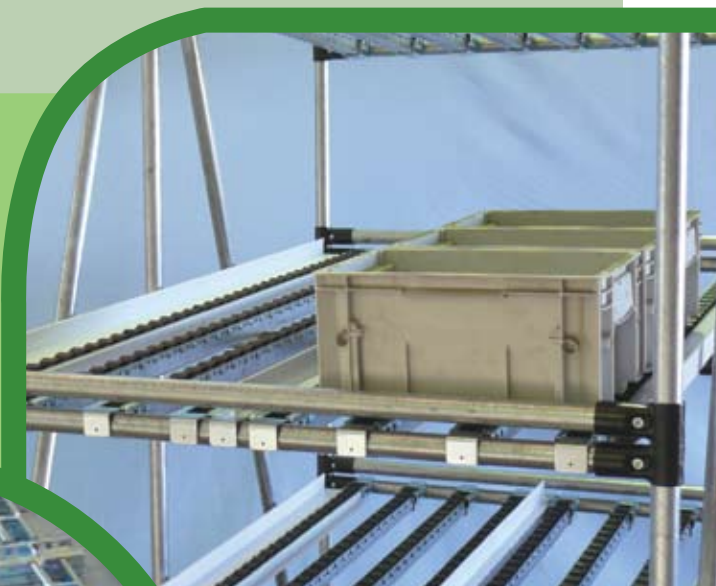
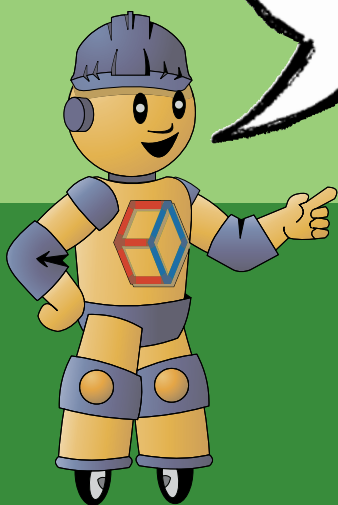
Label Holder 1



Label Holder 2



Label Holder 3







Marketplace  
racking

Towable carts,  
sequence and  
kitting supply  
methods



Carton flow  
concepts

## Starter kits

### Technical details

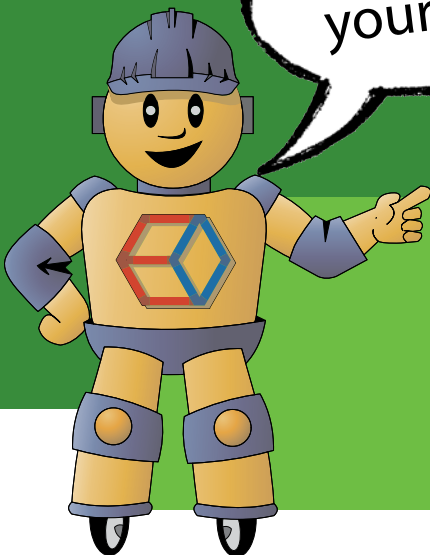
Clients can order a basic stock kit for general applications, or allow Enza to design a concept for approval and ship the approved concept to them in knockdown (CKD) form.

### Freighting details

- Kits are delivered door-to-door by air or by sea.
- Depending on the kit's weight, it will be packaged in cardboard or in a wooden crate for freighting.
- Clients can customise their order lot.
- Kits can be delivered in sub-assembly or component form.
- Clients can assemble the kit on-site or it can be sent to a contractor to sub-assemble it for them.



Do it yourself!



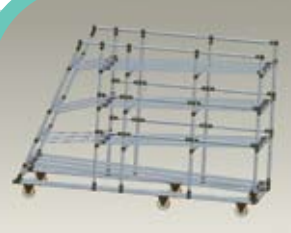


# Applications

## So simple to build

Our racking, trolleys and purpose-designed structures are easy to assemble or adapt for a wide range of applications in many different manufacturing environments.

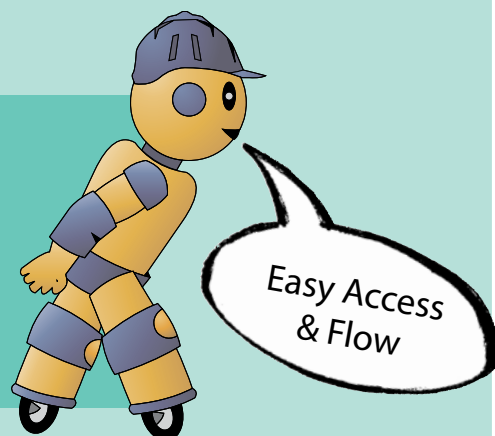
## Flow racks











- On-line racking ensures efficient presentation of parts. Numerous designs in live or static options.
- Work-in-process racks keep production flowing. Easily fitted, with minimum delay in production time.
- Tilt flow racks improve efficiency and presentation of parts.

## Towable carts / Push carts

- Carts are created by adding wheels to ensure mobility and flow.





## Workstations



- Workstations and work cells improve part layout and ease of assembly. Successful in sequence supply processing.
- Worktables are formed by adding boarding.

## Conveyors

- Roller conveyors ensure everything's on track.





## Specialised carts

- Trolleys - multi-purpose

trolleys and push trolleys



The use of numerous accessories ensures the correct storage of the parts.

## WIP racks





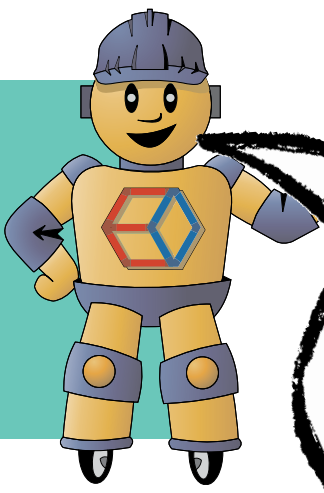


## Marketplace racking



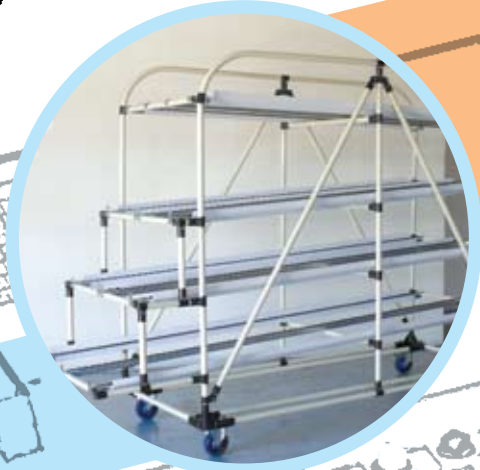
- Modular team gathering areas can be made with all necessary report and labelling details.





# The complete **LEAN fit** for a manufacturing environment

Carton flow

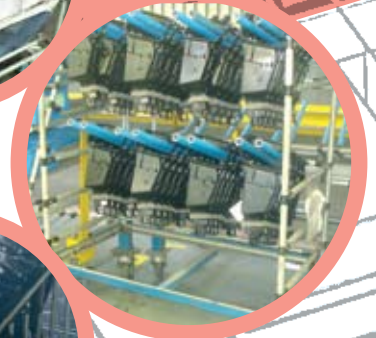


Gathering areas



WIP racks

Towable carts & trolleys



Marketplace racks

Conveyors

Workstation

Lineside racking